

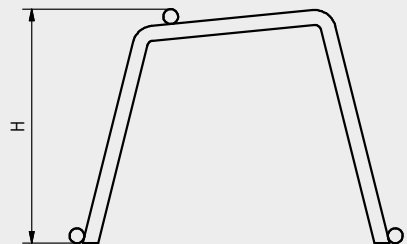
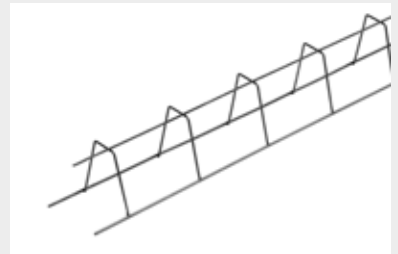
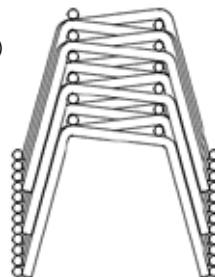
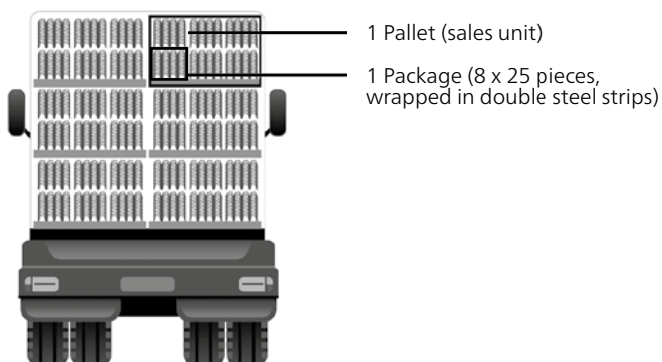
SPACER TYPE N N.R.PAL

Height (mm)	Length (m)	Sub-packaging (pieces)	Packaging (pieces)	Pallet (pieces)	Indicative weight (kg/pallet)
50	2	25	200	1200	660
60	2	25	200	1200	685
70	2	25	200	1200	710
80	2	25	200	1200	736
90	2	25	200	1200	761
100	2	25	200	1200	786
110	2	25	200	1200	811
120	2	25	200	1200	836
130	2	25	200	1200	862
140	2	25	200	1200	887
150	2	25	200	1200	912
160	2	25	200	1200	938
180	2	25	200	1200	989
200	2	25	200	1200	1037

ADVANTAGES

- Compact bundles
- Optimisation of packaging owed to stacking
- Almost 50% more spacers on one truck
- Pallets with blocks: faster unloading
- Stability of the packages even after opening them
- Without vertical flying ends
- Better stability: spacing reduced to 125mm
- Automatic stabilization through horizontal flying ends

LOADING EXAMPLE



Certificates Intersig NV



For the up to date scope on our certificates, we would like to refer you to our website.

INTERSIG

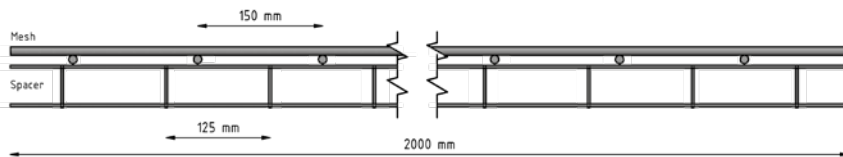
SPACER TYPE N N.R.PAL

REBAR TYPE

- Grade smooth

RECOMMENDED DISTANCE BETWEEN THE SPACERS

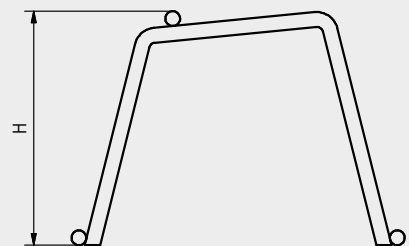
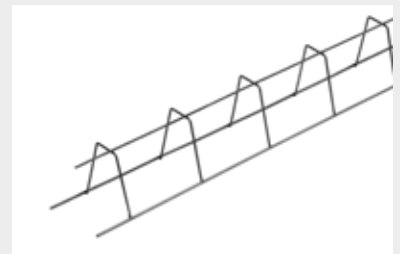
Reinforcement diameter	Distance between the spacers	Required length/m ²
< 6,5mm	500mm	2,00lm/m ²
6,5mm to 12mm	700mm	1,50lm/m ²
> 12mm	700mm	1,50lm/m ²



MAXIMUM DEFLECTION

Load	Height
4 kN	50 < h < 400mm
6 kN	6mm

Note: calculated according to equally divided maximum weight on a 1,35m² bearing surface (cfr. DBV-test)



Certificates Intersig NV



For the up to date scope on our certificates, we would like to refer you to our website.

INTERSIG