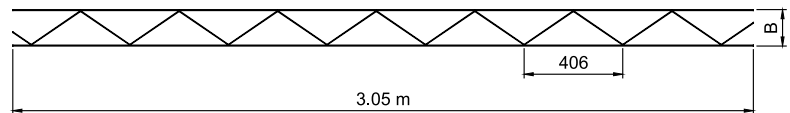


SIGMAFOR

SIGMAFOR is a prefabricated brickwork reinforcement made of galvanized steel and consisting of two parallel longitudinal wires, which are welded to a continuous diagonal wire.

Owing to its unique shape and the quality of the wires, Sigmafor brickwork reinforcement improves the resistance of the wall construction and prevents cracks which could occur due to shrinkage, movement or vibration.



CE

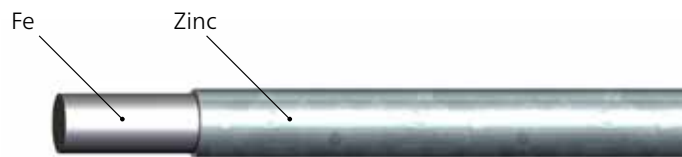
According to NBN EN 845-3

BRICKWORK REINFORCEMENT SFVZR SIGMAFOR ROUND

Round Sigmafor is used for regular masonry with thick mortar joints.

Width (mm)	Sub-packaging (pieces)	Sales packaging (pieces)	Wire combinations
50	20	600	4 / 3,7 / 4
80	20	600	4 / 3,7 / 4
100	20	600	4 / 3,7 / 4
150	20	400	4 / 3,7 / 4
200	20	200	4 / 3,7 / 4

Zinc coating: hot dipped galvanized wire with a zinc coating of 60gr/m².

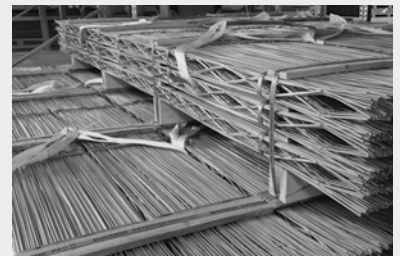
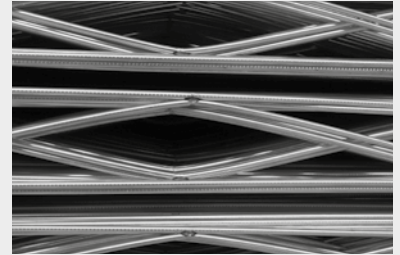
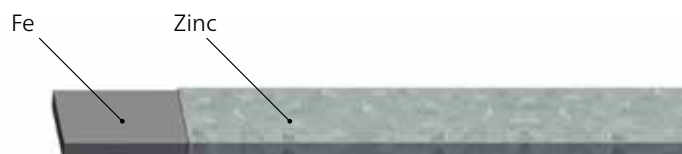


BRICKWORK REINFORCEMENT SFVZP SIGMAFOR FLAT

Flat Sigmafor is used for masonry with thin (glued) joints (aerated concrete blocks).

Width (mm)	Sub-packaging (pieces)	Sales packaging (pieces)	Wire combinations
40	20	600	8*1,8 / 2 / 8*1,8
90	20	600	8*1,8 / 2 / 8*1,8
140	20	400	8*1,8 / 2 / 8*1,8
190	20	200	8*1,8 / 2 / 8*1,8

Zinc coating: hot dipped galvanized wire with a zinc coating of 60gr/m².



Certificates Intersig NV



For the up to date scope on our certificates, we would like to refer you to our website.

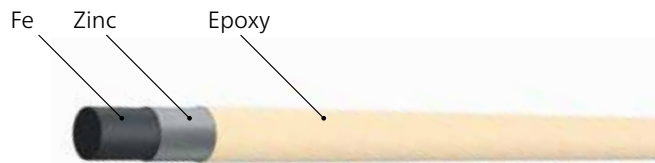


BRICKWORK REINFORCEMENT SFEPR SIGMAFOR ROUND EPOXY

Round Sigmafor with an epoxy coating is used for regular masonry with thick mortar joints that may be exposed to moisture and water (e.g. exterior walls).

Width (mm)	Sub-packaging (pieces)	Sales packaging (pieces)	Wire combinations
50	20	100	4 / 3,7 / 4

Zinc coating: hot dipped galvanized wire with a zinc coating of 60gr/m².
Epoxy coating: min. layer thickness of 80µm.

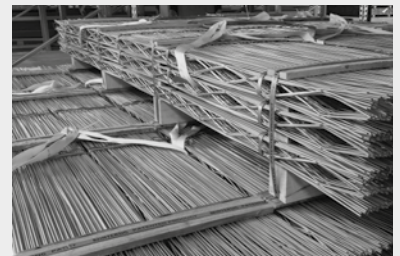
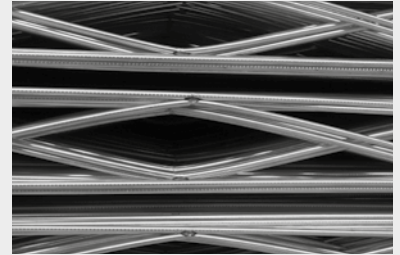
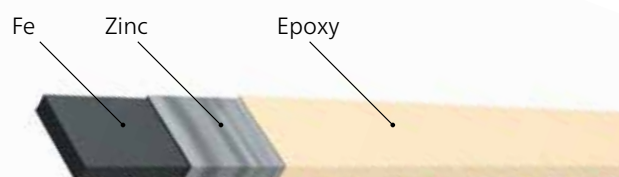


BRICKWORK REINFORCEMENT SFEPP SIGMAFOR FLAT EPOXY

Flat Sigmafor with an epoxy coating is used for masonry with thin (glued) joints (aerated concrete blocks) that may be exposed to moisture and water (e.g. exterior walls).

Width (mm)	Sub-packaging (pieces)	Sales packaging (pieces)	Wire combinations
40	20	100	8*1,8 / 2 / 8*1,8

Zinc coating: hot dipped galvanized wire with a zinc coating of 60gr/m².
Epoxy coating: min. layer thickness of 80µm



Certificates Intersig NV



For the up to date scope on our certificates, we would like to refer you to our website.

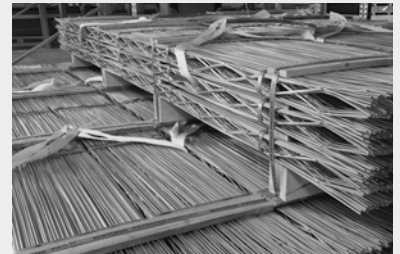
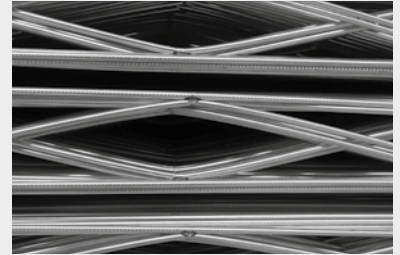
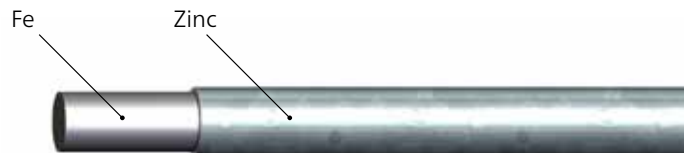


BRICKWORK REINFORCEMENT SFVZR.HD SIGMAFOR ROUND HEAVY DUTY

Sigmafor Heavy Duty is produced with thicker wires and is used in earthquake-prone areas.

Width (mm)	Sub-packaging (pieces)	Sales packaging (pieces)	Wire combinations
50	20	480	5 / 3,7 / 5
80	20	480	5 / 3,7 / 5
100	20	480	5 / 3,7 / 5
150	20	320	5 / 3,7 / 5
200	20	160	5 / 3,7 / 5
250	20	160	5 / 3,7 / 5
300	20	160	5 / 3,7 / 5

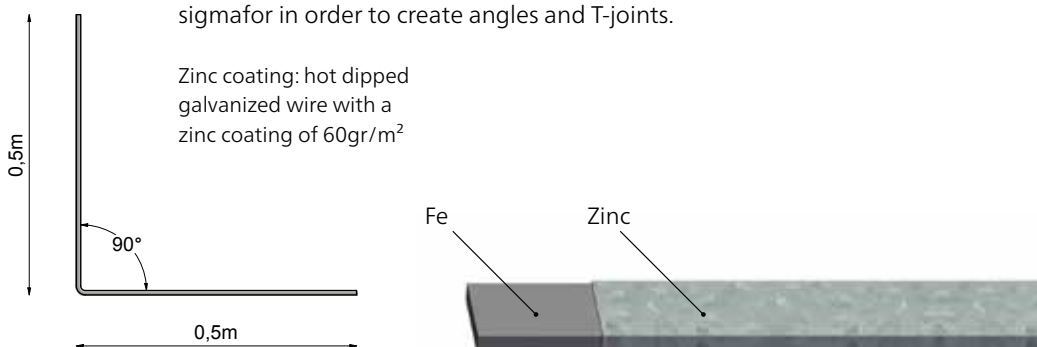
Zinc coating: hot dipped galvanized wire with a zinc coating of 60gr/m².



BRICKWORK REINFORCEMENT SFVZP.HOEK SIGMAFOR ANGLE

Sigmafor angles are used in combination with round and flat sigmafor in order to create angles and T-joints.

Zinc coating: hot dipped galvanized wire with a zinc coating of 60gr/m²



Certificates Intersig NV



For the up to date scope on our certificates, we would like to refer you to our website.

