

LATTICE GIRDERS SINGLE GIRDERS ET

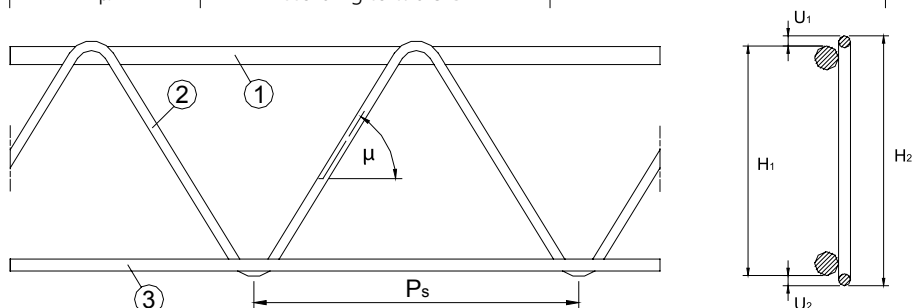
Height (mm)	Upper wire	Diagonal wire	Lower wire
70 -> 120	ø5 -> ø12	ø4 -> ø6	ø5 -> ø12
130 -> 140	ø5 -> ø12	ø4 -> ø7	ø5 -> ø12
150 -> 250	ø5 -> ø12	ø4,5 -> ø7	ø5 -> ø12
260 -> 300	ø5 -> ø12	ø5 -> ø7	ø5 -> ø12

REMARKS

- Girders cut to length: from 1m up to 6m in steps of 10cm
- The diameters of the upper and lower wires need to be the same

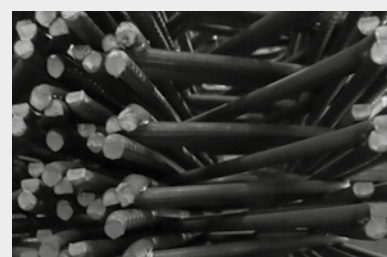
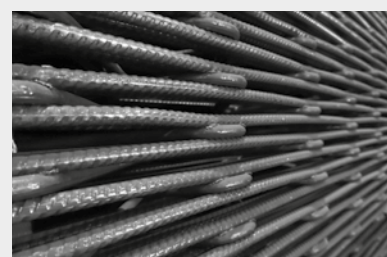
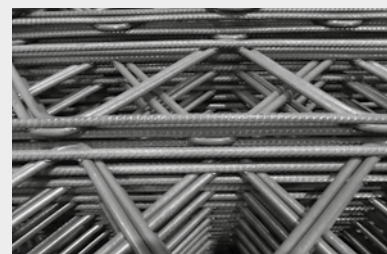
DIMENSIONS

	(mm)	
H1	70 - 300	Calculated height
H2	H1 + 8	Total height
1	5 - 12	Upper wire
2	4 - 7	Diagonal wire
3	5 - 12	Lower wire
U1	4	Upper protrusion
U2	4	Lower protrusion
Ps	200	Step of the diagonals
μ	According to table CKT	



REBAR TYPE

- Upper wire
B500A ribbed or smooth
B500B indented
- Diagonal wire
B500 smooth, B500A smooth
B500B indented
- Lower wire
B500A ribbed
B500B indented



For the up to date scope on
our certificates, we would like
to refer you to our website.