

## COIL CLAMPS

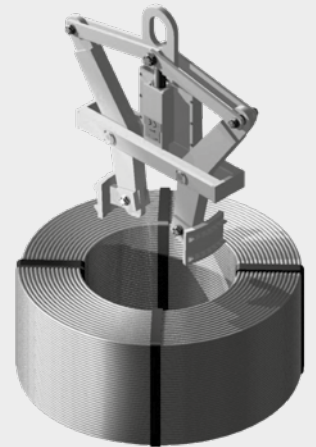
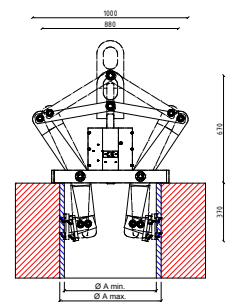
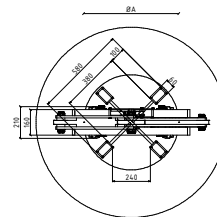
# COIL CLAMP R/5000

This coil clamp can be used to lift and move cold drawn coils. According to the inner diameter of the coil, the coil can be equipped with different sets of clamp jaws. The standard execution is with type R5000/600/6S. This coil clamp is also available for galvanised wire.

Type R/5000  
Maximum lifting capacity: 5200 kg  
Net weight: 190 kg

### CLAMP JAWS

Type	Inner diameter of the coil
R/5000/540/6S	from 510mm to 540mm = max
R/5000/560/6S	from 540mm to 570mm = max
R/5000/600/6S	from 580mm to 610mm = max
R/5000/620/6S	from 600mm to 630mm = max
R/5000/640/6S	from 610mm to 640mm = max



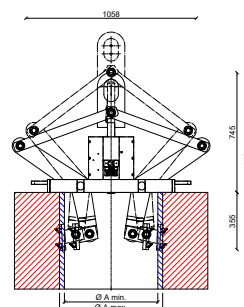
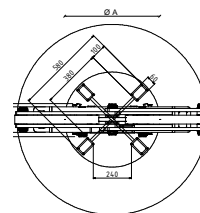
## COIL CLAMP RS/5000

This coil clamp can be used to lift and move hot rolled coils that are perfectly spooled. According to the inner diameter of the coil, the coil can be equipped with different sets of clamp jaws. The standard execution is with type RS5000/600/6S. This coil clamp is also available for galvanised wire.

Type RS/5000  
Maximum lifting capacity: 5200 kg  
Net weight: 220 kg

### CLAMP JAWS

Type	Inner diameter of the coil
RS/5000/560/6S	from 540mm to 600mm = max
RS/5000/600/6S	from 580mm to 640mm = max



## COIL CLAMPS

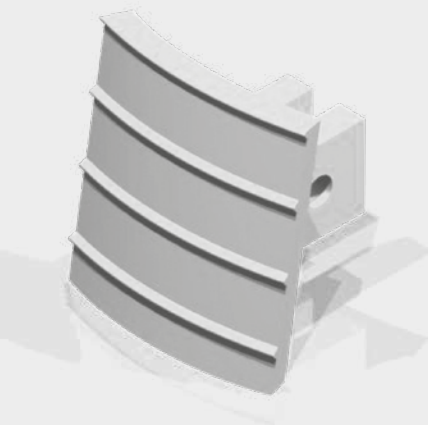
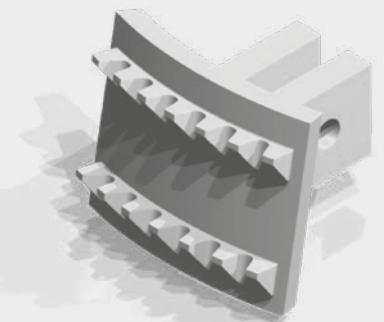
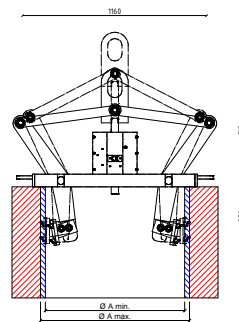
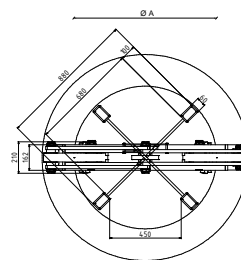
# COIL CLAMP RS/5000/900

This coil clamp can be used to lift and move cold drawn coils with an inner diameter of 900mm. The standard execution is with clamp jaws type RS5000/900/6S.

Type RS/5000/900  
 Maximum lifting capacity: 5200 kg  
 Net weight: 231 kg

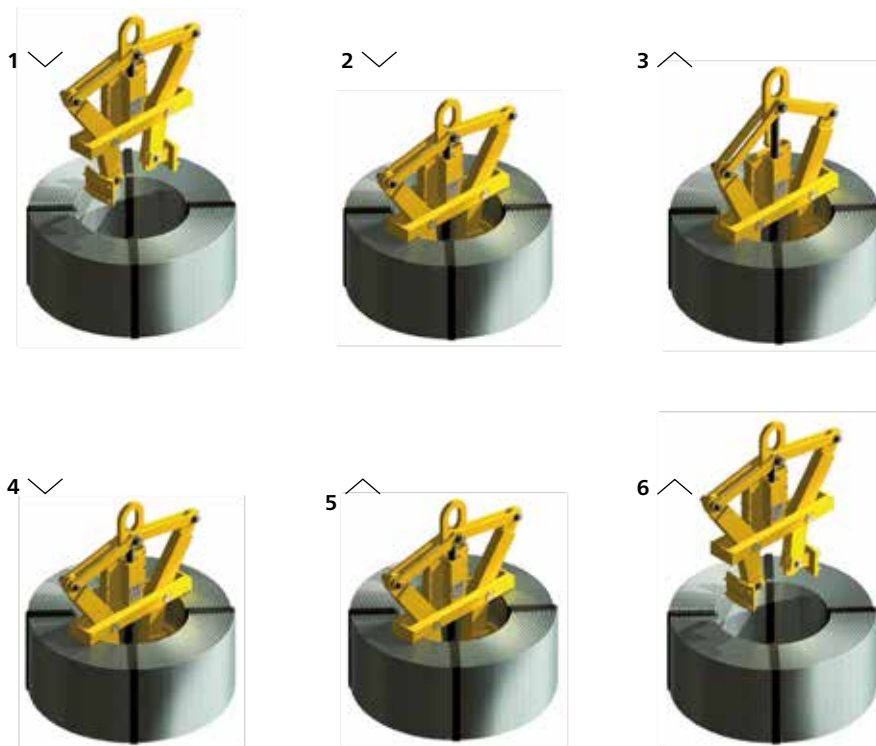
### CLAMP JAWS

Type	Inner diameter of the coil
RS/5000/900/6S	from 880mm to 910mm = max



## COIL CLAMPS

# COIL CLAMP INSTRUCTIONS



- 1 Lower the clamp into the coil. Make sure that the jaws of the clamp do not grab the strapping.
- 2 When the bridge of the clamp rests on the coil, lower the hook completely until its lowest point.
- 3 When the clamp is lifted, the closing mechanism unlocks and the jaws of the clamp will grab the coil.
- 4 When putting down, lower the hook completely until the locking mechanism closes. If the clamp is used to put rolls onto a reel, make sure that nothing can prevent the lowering of the jaws of the clamp, otherwise, the load could get loose.
- 5-6 Now, the coil clamp can be lifted freely.

### ATTENTION!

Please check regularly

- 1 The moving joints for wear and ensure all bolted connections are secure.
- 2 The cogs of the clamp jaws (when the cogs are not sharp enough due to wear and tear, the coil can start to slip). Replace when necessary.
- 3 Wear and tear on the connecting shafts.

