

COIL CLAMPS

COIL CLAMP R/5000

This coil clamp can be used to lift and move cold drawn coils. According to the inner diameter of the coil, the coil can be equipped with different sets of clamp jaws. The standard execution is with type R5000/600/6S. This coil clamp is also available for galvanised wire.

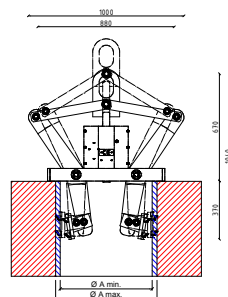
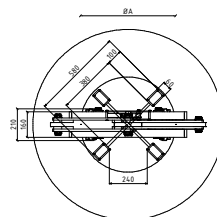
Type R/5000

Maximum lifting capacity: 5200 kg

Net weight: 190 kg

CLAMP JAWS

Type	Inner diameter of the coil
R/5000/540/6S	from 510 mm to 540 mm = max
R/5000/560/6S	from 540 mm to 570 mm = max
R/5000/600/6S	from 580 mm to 610 mm = max
R/5000/620/6S	from 600 mm to 630 mm = max
R/5000/640/6S	from 610 mm to 640 mm = max



COIL CLAMP RS/5000

This coil clamp can be used to lift and move hot rolled coils that are perfectly spooled. According to the inner diameter of the coil, the coil can be equipped with different sets of clamp jaws. The standard execution is with type RS5000/600/6S. This coil clamp is also available for galvanised wire.

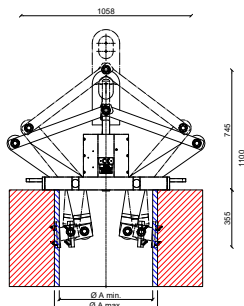
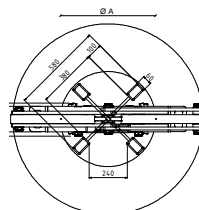
Type RS/5000

Maximum lifting capacity: 5200 kg

Net weight: 220 kg

CLAMP JAWS

Type	Inner diameter of the coil
RS/5000/560/6S	from 540 mm to 600 mm = max
RS/5000/600/6S	from 580 mm to 640 mm = max



COIL CLAMP RS/5000/900

This coil clamp can be used to lift and move cold drawn coils with an inner diameter of 900mm. The standard execution is with clamp jaws type RS5000/900/6S.

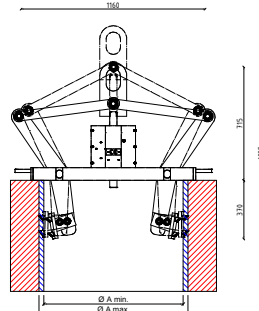
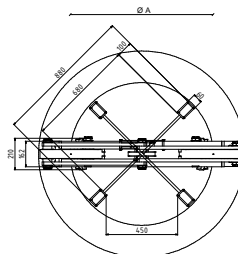
Type RS/5000/900

Maximum lifting capacity: 5200 kg

Net weight: 231 kg

CLAMP JAWS

Type	Inner diameter of the coil
RS/5000/900/6S	from 880 mm to 910 mm = max



Version June 2020



COIL CLAMP INSTRUCTIONS

1 ✓



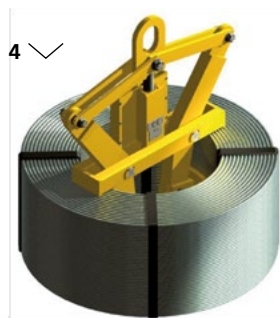
2 ✓



3 ✓



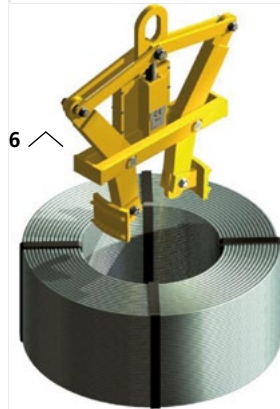
4 ✓



5 ✓



6 ✓



- 1 Lower the clamp into the coil. Make sure that the jaws of the clamp do not grab the strapping.
- 2 When the bridge of the clamp rests on the coil, lower the hook completely until its lowest point.
- 3 When the clamp is lifted, the closing mechanism unlocks and the jaws of the clamp will grab the coil.
- 4 When putting down, lower the hook completely until the locking mechanism closes. If the clamp is used to put rolls onto a reel, make sure that nothing can prevent the lowering of the jaws of the clamp, otherwise, the load could get loose.
- 5-6 Now, the coil clamp can be lifted freely.

ATTENTION!

Please check regularly

- 1 The moving joints for wear and ensure all bolted connections are secure.
- 2 The cogs of the clamp jaws (when the cogs are not sharp enough due to wear and tear, the coil can start to slip). Replace when necessary.
- 3 Wear and tear on the connecting shafts.

Version June 2020

