

BARS**COLD DRAWN
SMOOTH B500A**

Diameter (mm)	Minimum length (m)	Maximum length (m)	Weight (kg/m)
4	0,10	14	0,099
4,5	0,10	14	0,125
5	0,10	14	0,154
5,5	0,10	14	0,187
6	0,10	14	0,222
7	0,10	14	0,302
8	0,10	14	0,395
10	0,10	14	0,617
12	0,10	14	0,888

COMMENTS

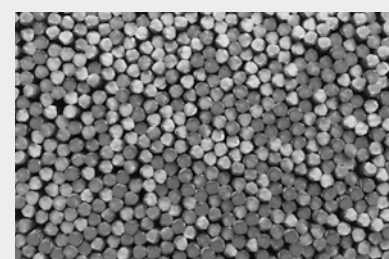
- Diameters $< \varnothing 5$ are quality B500 instead of B500A
- Only diameters 6, 8, 10 and 12 are certified for Germany

ADDITIONAL INFORMATION

- Bundle weights: standard ± 1000 kg, unless agreed otherwise
- Tolerance: we can cut accurately to $-0/+0$ mm
- All our bundles are vibrated so that the bars lie side by side

GRADE B500A

Mechanical characteristics	Yield strength Re (Mpa)	Stress ratio Rm/Re		Total elongation at max force Agt %	
		$5 \leq d \leq 5.5$	$d \geq 6$	$5 \leq d \leq 5.5$	$d \geq 6$
Minimum karakteristieke waarde Cv	500	1,03	1,05	2,0	3,0



Certificates Intersig NV

Certificates
Van Merksteijn International

For the up to date scope on our certificates, we would like to refer you to our website.